

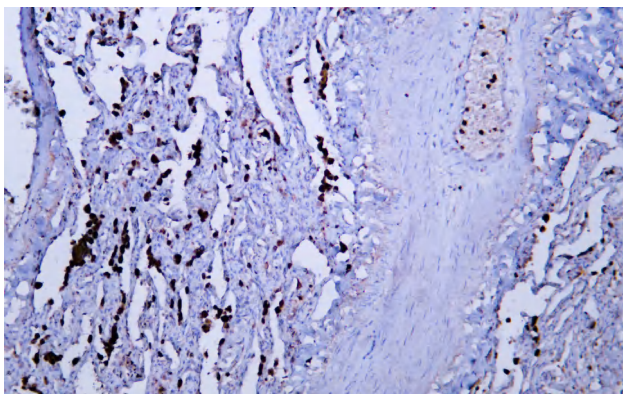


# Lysozyme mouse mAb(ABT191)

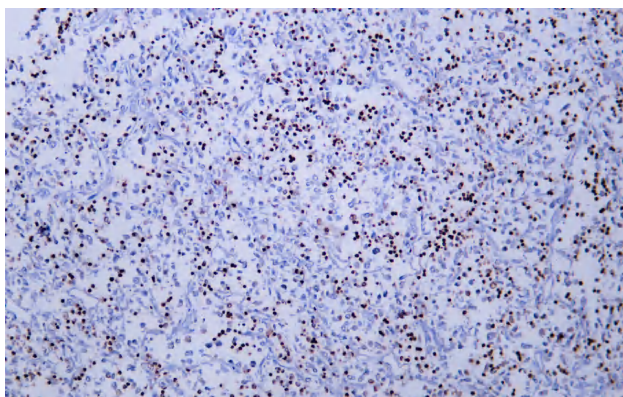
<b>Catalog No</b>	YP-Ab-15598
<b>Isotype</b>	IgG
<b>Reactivity</b>	Human;Mouse;Rat
<b>Applications</b>	IHC;WB;IF
<b>Gene Name</b>	LYZ LZM
<b>Protein Name</b>	Lysozyme
<b>Immunogen</b>	Synthesized peptide derived from human Lysozyme
<b>Specificity</b>	The antibody can specifically recognize human Lysozyme protein.
<b>Formulation</b>	Liquid in PBS containing 50% glycerol, 0.5% BSA and 0.156% sodium azide.
<b>Source</b>	Mouse, Monoclonal/IgG3, Kappa
<b>Purification</b>	The antibody was affinity-purified from mouse ascites by affinity-chromatography using specific immunogen.
<b>Dilution</b>	IHC-p 1:100-500, WB 1:200-1000, IF 1:100-500
<b>Concentration</b>	1 mg/ml
<b>Purity</b>	≥90%
<b>Storage Stability</b>	-20°C/1 year
<b>Synonyms</b>	Lysozyme C (EC 3.2.1.17;1,4-beta-N-acetylmuramidase C)
<b>Observed Band</b>	
<b>Cell Pathway</b>	Secreted.
<b>Tissue Specificity</b>	
<b>Function</b>	ERROR 42
<b>Background</b>	ERROR 42
<b>matters needing attention</b>	Avoid repeated freezing and thawing!
<b>Usage suggestions</b>	This product can be used in immunological reaction related experiments. For more information, please consult technical personnel.



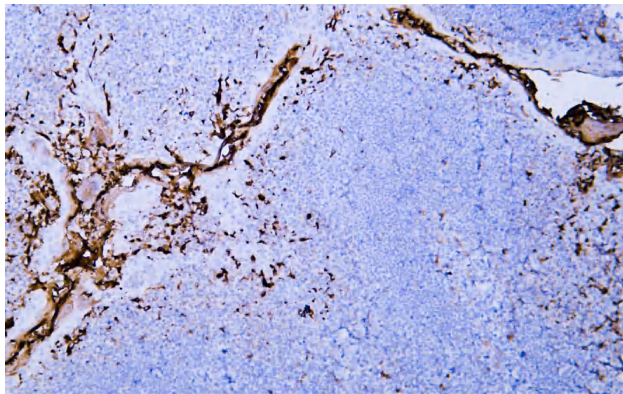
## Products Images



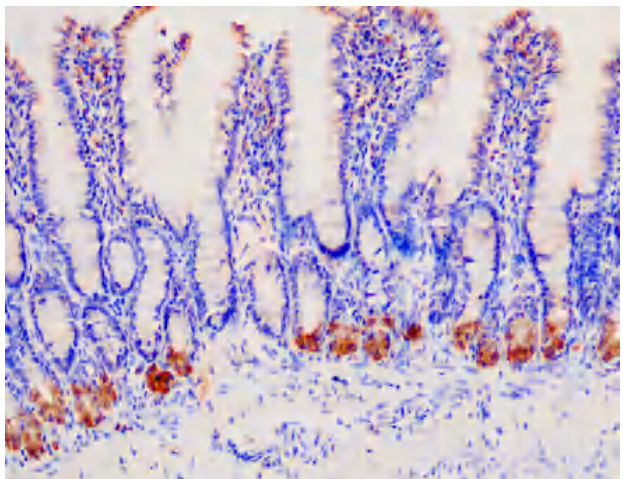
Human lung tissue was stained with Anti-Lysozyme (ABT191) Antibody



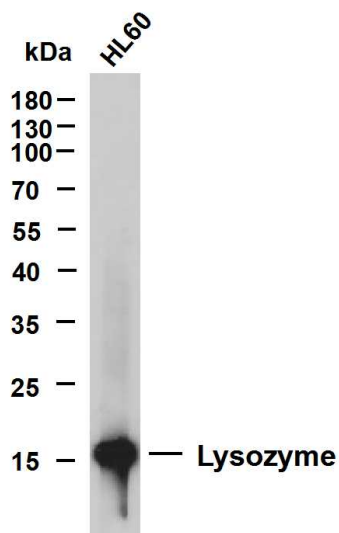
Human malignant fibrous histiocytoma tissue was stained with Anti-Lysozyme (ABT191) Antibody



Human tonsil tissue was stained with Anti-Lysozyme (ABT191) Antibody



Immunohistochemical analysis of rat-colon tissue. 1, primary Antibody was diluted at 1:200(4°C,overnight). HRP labeled Secondary antibody room temperature, 50min(Cat: RS0033).



HL60 whole cell lysates were separated by 12% SDS-PAGE, and the membrane was blotted with anti-Lysozyme(ABT191) antibody. The HRP-conjugated Goat anti-Mouse IgG(H + L) antibody was used to detect the antibody. Lane 1: HL60  
Predicted band size: 17kDa Observed band size: 17kDa